



## Harrington Gardens, SW7

£850 per week Unfurnished

Fees apply

1006 sq ft (93 m<sup>2</sup>) • 2 double bedrooms • 2 bathrooms •  
Reception room • Kitchen • Communal Gardens • EPC: D





This stunning and spacious two bedroom flat benefits from wooden flooring throughout and direct access out onto the communal gardens. The light and bright property comprises of two large double bedrooms, two bathrooms, a reception and dining area, as well as a fully fitted kitchen. The flat is ideally situated close to the transport links and amenities of both Gloucester Road and South Kensington.

2 double bedrooms

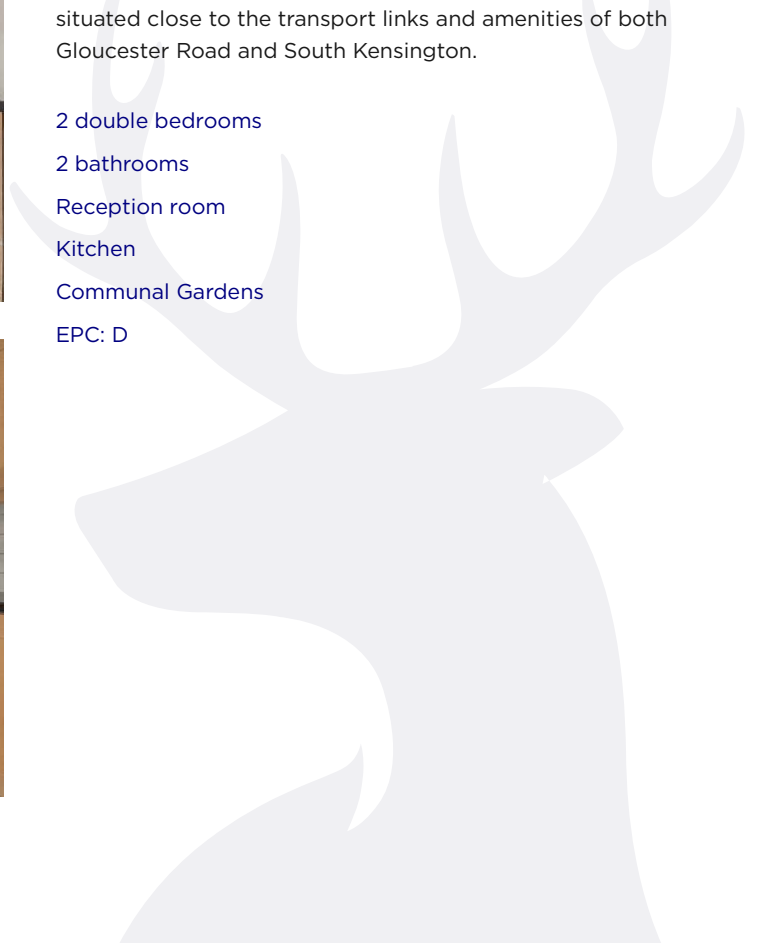
2 bathrooms

Reception room

Kitchen

Communal Gardens

EPC: D



Approximate gross floor area:  
1006 sq ft (93 m<sup>2</sup>)  
Includes Cellar or Storage  
Space where applicable

FOR ILLUSTRATIVE PURPOSES  
ONLY. NOT TO SCALE.

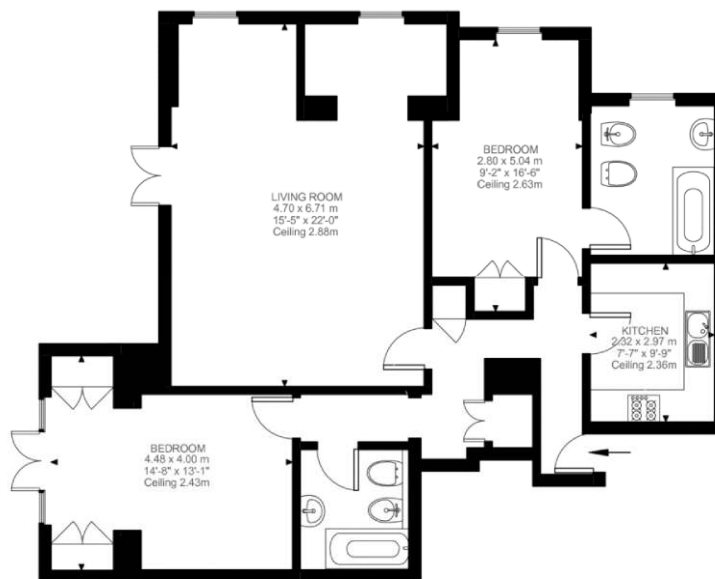
As defined by RICS code of  
measuring practice

This floorplan is representative and for  
illustrative purposes only. The measurements  
provided are approximate only and not to  
scale. They should not be relied upon by any  
party. Prospective purchasers or tenants are  
advised to carry out their own survey if they  
require reliable measurements. No  
responsibility is taken for any error, omission,  
miss-statement or use of data shown.  
Details Prepared: 15 May 2018

Harrington Gardens, South Kensington, SW7



APPROXIMATE GROSS INTERNAL (LIVING) AREA  
93.51 SQ.M / 1006 SQ.FT



LOWER GROUND FLOOR  
1006 SQ.FT / 93.51 SQ.M



Disclaimer:

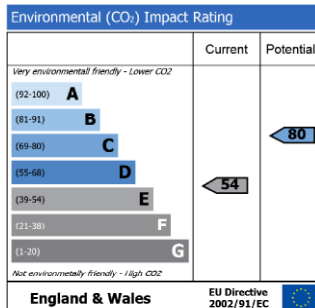
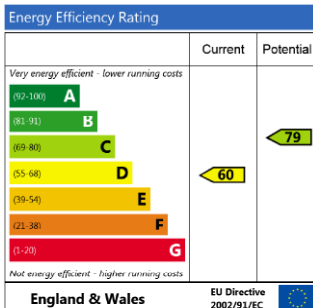
Not to scale, for guidance only and must not be relied upon as a statement of fact. All measurements and areas are approximate only and have been prepared for Douglas & Gordon in accordance with the current edition of the RICS Code of Measuring Practice.





## Good to know

Nearby station: Gloucester Road  
 230m (2 mins) (Line of sight)  
 Gross floor area: 1006 sq ft (93 m<sup>2</sup>)



\* Douglas & Gordon will charge an initial one off tenancy agreement fee of £300 per tenancy and an individual tenant reference fee of £45 per tenant. For further details please go to <http://www.douglasandgordon.com/fees-and-terms-tenants>

## Gloucester Road Office

22 Gloucester Road, SW7 4RB  
 grlets@dng.co.uk

020 7589 5252  
 douglasandgordon.com

