



St. Luke's Street, SW3

£1,500,000 Freehold

1102 sq ft (102 m²) • 3 bedrooms • Bathroom • 2 reception room • Kitchen • Garden • Vaults



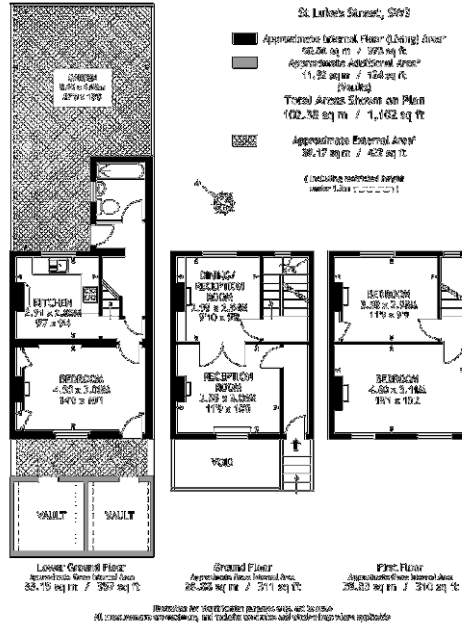
**Approximate gross floor area:
1102 sq ft (102 m²)
Includes Cellar or Storage Space
where applicable**

FOR ILLUSTRATIVE PURPOSES ONLY. NOT TO SCALE.

As defined by RICS code of measuring practice

Fulham Performance

This floorplan is representative and for illustrative purposes only. The measurements provided are approximate only and not to scale. They should not be relied upon by any party. Prospective purchasers or tenants are advised to carry out their own survey if they require reliable measurements. No responsibility is taken for any error, omission, misstatement or use of data shown.
Details Prepared: 5 February 2016



A rare opportunity to acquire this development opportunity in one of Chelsea's most desirable streets. An unmodernised Victorian freehold with garden to the rear, currently arranged over lower ground, ground and first floors with the opportunity to extend, subject to consent.

St Luke's Street runs south from Cale Street towards Britten Street, adjacent to St Luke's Church and gardens. It is within easy walking distance of the shops and restaurants of the Kings Road and Chelsea Green.

Good to know

Local authority: Kensington & Chelsea
Council tax band: G

Joint sole agent

Frost Meadowcroft - 020 7938 2341



Chelsea Office

45 Sloane Avenue, SW3 3DH
chelseasales@dng.co.uk

020 7225 1225
douglasandgordon.com

